

Trans-Mit for Macola v 7.x

Application specific instructions

Trans-Mit may support other accounting software applications. The following instructions are specific for Macola 7.x software.

Revised 02/17/2003

Copyright 1990-2001
Trans-Micro, Inc.
Fairfield, FL
All Rights Reserved

No part of this publication may be reproduced, or transmitted in any form or by any means without the written permission of Trans-Micro, Inc. The software described by this publication is furnished under a license agreement, and may be used or copied only in accordance with the terms of that agreement.

Use of this program acknowledges this disclaimer of warranty: This program is supplied as is. Trans-Micro, Inc. disclaims all warranties, expressed or implied, including, without limitation, the warranties of merchantability and of fitness of this program for any purpose. Trans-Micro, Inc. assumes no liability for damages direct or consequential, which may result from the use of this program.

Portions of the Fax-A-Form program are licensed from third parties.

Faccent is licensed from Elan Technologies, Inc., Montreal, Quebec, Canada.

FaxMan is used under license from Data Techniques, Inc., Burnsville, NC

Contents

Installation	1
Install Modified Macola 7.x	
Report Formats	1
Installing The Modified Reports	1
Import Modified Reports	2
Install Modified Form Fields	3
PO / Orders	3
AR / Invoice	4
AR / Statement	5
OE / Invoice.	6
OE / Acknowledgement	7
OE / Quote	8

Installation

Install Trans-Mit to your MACOLA7x folder on your server.

Example: F:\MACOLA70

You must have Check Factory v 2.x installed below this folder first or Trans-Mit will not install.

Please see the Trans-Mit manual for complete installation instructions.

Install Modified Macola 7.x Report Formats

The following report formats have been modified to include the special Trans-Mit trigger codes.

Export File	Form No.	Macola Form Name
ARSTMFRM.TXT	55	AR Statement
OEACKFRM.TXT	55	OE Acknowledgement
POORDFRM.TXT	55	PO Purchase Order
OEINVFRM.TXT	55	OE Invoice
OEPIKFRM.TXT	55	OE Picking Ticket
OEPAKFRM.TXT	55	OE Packing Slip
ARINVFRM.TXT	55	AR Invoice
OEQTEFRM.TXT	55	OE Quotation

The modified reports pass, via the print job, the Fax Number, Contact Name, and Company name to Trans-Mit. IF THE MODIFIED REPORTS ARE NOT USED Trans-Mit WILL NOT WORK!

Installing The Modified Reports

Your Trans-Mit reports are in the MACOLA70\CFACTORY\REPORTS\TRANSMIT folder on your server. Do not use the reports in:

MACOLA70\CFACORY\REPORTS, they do not have the Trans-Mit information in them.

You must **COPY** the files from the REPORTS\TRANSMIT folder to **EACH** of your Macola data directories that will be used with Trans-Mit. This can be done with the windows explorer or via DOS.

Import Modified Reports

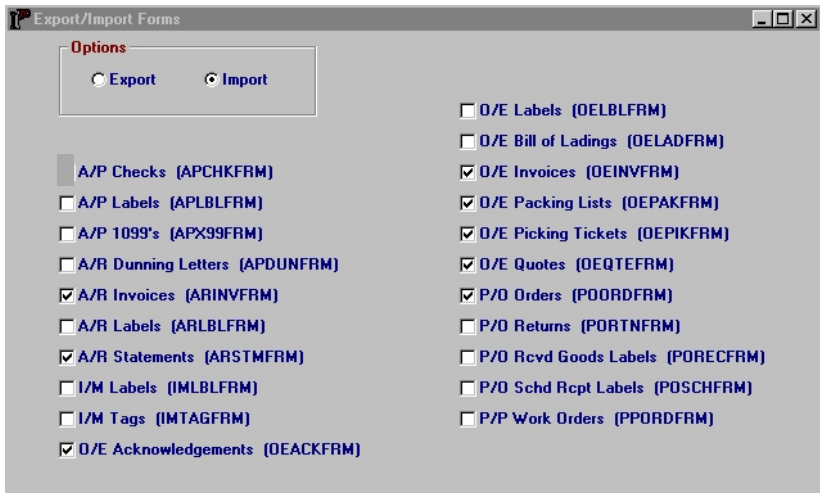
Run Macola 7.x System Manager

For EACH Macola company:

Log on as SUPERVISOR

Select Maintain, Form Maintenance, Export/Import Forms

Check the boxes displayed below:



Click on the Disk Icon to import the modified formats.

REPEAT THIS PROCEDURE FOR EACH MACOLA COMPANY.

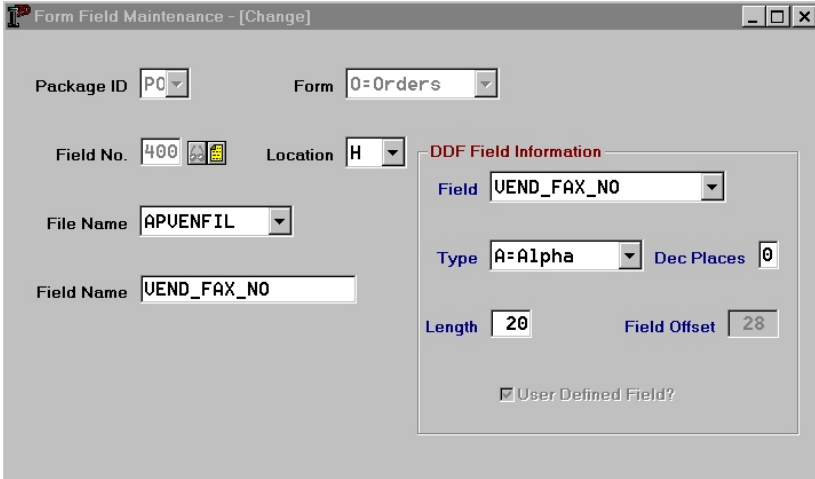
The imported report formats for Trans-Mit will show up on the Macola report list preceded by the Words “Trans-Mit”. Please use the Trans-Mit labeled reports when using Trans-Mit.

Install Modified Form Fields

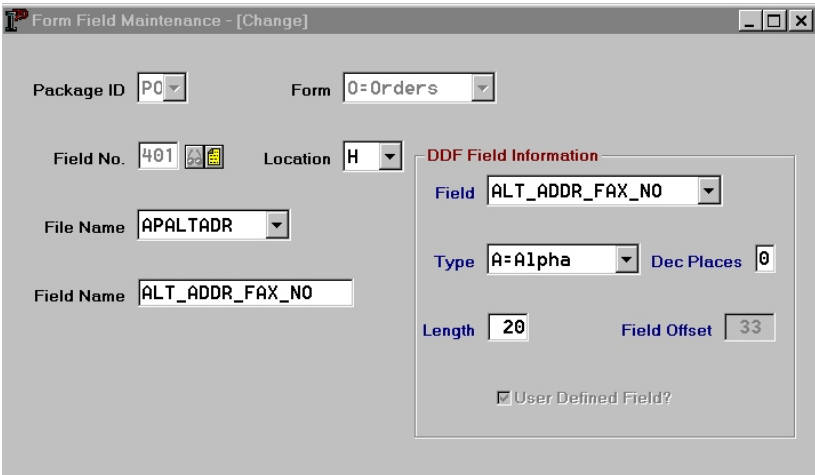
The following fields must be added for each Macola company that you will be using Trans-Mit with.

Run Macola 7.x System Manager. Click on Maintain, Form Maintenance, Form Field Maintenance.

PO / Orders



The screenshot shows the 'Form Field Maintenance' window for Package ID 'PO' and Form '0=Orders'. The main form is for Field No. 400, with File Name 'APUENFIL' and Field Name 'UEND_FAX_NO'. The Location is set to 'H'. A 'DDF Field Information' panel is open, showing the Field Name 'UEND_FAX_NO', Type 'A=Alpha', Dec Places '0', Length '20', and Field Offset '28'. The 'User Defined Field?' checkbox is checked.



The screenshot shows the 'Form Field Maintenance' window for Package ID 'PO' and Form '0=Orders'. The main form is for Field No. 401, with File Name 'APALTADR' and Field Name 'ALT_ADDR_FAX_NO'. The Location is set to 'H'. A 'DDF Field Information' panel is open, showing the Field Name 'ALT_ADDR_FAX_NO', Type 'A=Alpha', Dec Places '0', Length '20', and Field Offset '33'. The 'User Defined Field?' checkbox is checked.

Package ID Form

Field No. Location DDF Field Information

File Name Field

Field Name Type Dec Places

Length Field Offset

Add three fields, VEND_FAX_NO, ALT_ADDR_FAX_NO, and EMAIL_ADDR using field numbers 400, 401, 402 respectively otherwise the Purchase Order form will not operate correctly.

AR / Invoice

Package ID Form

Field No. Location DDF Field Information

File Name Field

Field Name Type Dec Places

Length Field Offset

User Defined Field?

Package ID Form

Field No. Location

File Name

Field Name

DDF Field Information

Field

Type Dec Places

Length Field Offset

User Defined Field?

Package ID Form

Field No. Location

File Name

Field Name

DDF Field Information

Field

Type Dec Places

Length Field Offset

Add the three fields: CUS_FAX_NO, CUS_CONTACT, EMAIL_ADDR

You MUST use the field numbers 300, 301, 302 respectively otherwise the form will not operate correctly.

AR / Statement

Package ID Form

Field No. Location

File Name

Field Name

DDF Field Information

Field

Type Dec Places

Length Field Offset

User Defined Field?

Package ID Form

Field No. Location

File Name

Field Name

DDF Field Information

Field

Type Dec Places

Length Field Offset

Package ID Form

Field No. Location

File Name

Field Name

DDF Field Information

Field

Type Dec Places

Length Field Offset

Add the three fields: CUS_FAX_NO, CUS_CONTACT, EMAIL_ADDR

You MUST use the field numbers 300, 301, 302 respectively otherwise the form will not operate correctly.

OE / Invoice

Package ID Form

Field No. Location

File Name

Field Name

DDF Field Information

Field

Type Dec Places

Length Field Offset

Package ID Form

Field No. Location

File Name

Field Name

DDF Field Information

Field

Type Dec Places

Length Field Offset

Package ID Form

Field No. Location

File Name

Field Name

DDF Field Information

Field

Type Dec Place

Length Field Offset

Add the three fields: CUS_FAX_NO, CUS_CONTACT, EMAIL_ADDR

You MUST use the field numbers 300, 301 and 302 respectively otherwise the form will not operate correctly.

OE / Acknowledgement

Package ID	OE	Form	A=Acknowled
Field No.	300	Location	H
File Name	ARCUSFIL	DDF Field Information	
Field Name	CUS_FAX_NO	Field	CUS_FAX_NO
		Type	A=Alpha
		Dec Places	0
		Length	20
		Field Offset	36

Package ID	OE	Form	A=Acknowled
Field No.	301	Location	H
File Name	ARCUSFIL	DDF Field Information	
Field Name	CUS_CONTACT	Field	CUS_CONTACT
		Type	A=Alpha
		Dec Places	0
		Length	40
		Field Offset	23

Package ID	OE	Form	A=Acknowledg
Field No.	302	Location	H
File Name	ARCTLFIL	DDF Field Information	
Field Name	EMAIL_ADDR	Field	EMAIL_ADDR
		Type	A=Alpha
		Dec Places	0
		Length	40
		Field Offset	1168

Add the three fields: CUS_FAX_NO, CUS_CONTACT and EMAIL_ADDR

You MUST use the field numbers 300, 301, 302 respectively otherwise the form will not operate correctly.

OE / Quote

Package ID	OE	Form	Q=Quotes
Field No.	300	Location	H
File Name	ARCUSFIL	DDF Field Information	
Field Name	CUS_FAX_NO	Field	CUS_FAX_NO
		Type	A=Alpha
		Dec Places	0
		Length	20
		Field Offset	36

Package ID	OE	Form	Q=Quotes
Field No.	301	Location	H
File Name	ARCUSFIL	DDF Field Information	
Field Name	CUS_CONTACT	Field	CUS_CONTACT
		Type	A=Alpha
		Dec Places	0
		Length	40
		Field Offset	23

Package ID	0E	Form	Q=Quotes
Field No.	302	Location	
File Name	ARCTLFIL	- DDF Field Information -	
Field Name	EMAIL_ADDR	Field	EMAIL_ADDR
		Type	A=Alpha
		Dec Places	0
		Length	40
		Field Offset	1168

Add the three fields: CUS_FAX_NO, CUS_CONTACT, EMAIL_ADDR

You **MUST** use the field numbers 300 and 301 respectively otherwise the form will not operate correctly.